



Lake View's Nature News

Newsletter of the Lake View Nature Center

Summer
2005

LVNC Dino Daze

Lake View Nature Center went dinosaur crazy for a few weeks recently. Special guest at this event was a full-size replica of "Sue" the Tyrannosaurus Rex on loan from The Field Museum. (See picture below.) In fact, this was such a huge event that



some of the activities had to take place across the lake in the Fitness Center. Of course, this was due largely to the fact that the skull was too big to fit through the doors to the Nature Center!

School and scout groups that attended Dino Daze programs learned about dinosaur life cycles, dinosaur

predators and prey, fossils, and how fossils and bones can provide clues that show scientists how dinosaurs lived. And, of course, they got to see "Sue" up close.

Museum funding update

In our last newsletter we told you about the pending loss of funding for the Lake View Nature Center and twenty-two other park districts, and museums throughout Illinois. We are happy to report that the Illinois General Assembly recently voted to reallocate the funding. Unfortunately, as this goes to print the Governor's office still has not released the monies. We will continue to provide current levels of service for as long as possible. We want to thank our supporters who made donations and called their representatives, you really made a difference.

Look inside for...

Featured animals:

Illinois' newest state symbols

Special pull-out section for kids:
games, crafts, and activities

Summer classes and programs

LVNC Notes...

Passport to Adventure booklets should be available at LVNC beginning in late May. Call for more information.

Fishing equipment is available for use in our lake beginning April 1st. We usually have bait available for sale but you're welcome to bring your own.

Now that warmer weather is coming, remember that we have sand toys, binoculars, bug boxes, magnifying glasses, and field guides available to be checked out for use in exploring the park.

The Nature Center will be closed:

May 30

July 4

Sept. 5

Sept. 10

Spring Celebration

Saturday, May 14
Noon to 4:00 pm

Spring is busting out all over! Come celebrate at the Lake View Nature Center!

This year's event will be held in the new "green space" adjacent to the Nature Center, a suggested donation of \$10 per family is appreciated.

Join us in the morning for a 5K Run/Walk to benefit Midwest SOARRING's Bison Reintroduction Program. Participant fee of \$25.

Other scheduled activities and events:

- Campfire circle
- Garden walk
- Birds of prey
- Animal visitors
- Craft activity
- Concessions
- Paddleboat rides
- Free concert
- Self-guided nature hike

Wild Wednesdays

Join us on Wednesdays this summer for a wild time in the park. We have activities planned throughout the day. Enjoy the Nature Center exhibits, storytime, a Naturalist talk on a featured animal, and a self-guided hike. Lemonade will also be available if you get thirsty.

Paddleboat rentals are also available for a small fee (\$3 per half hour).

The events will go on rain or shine. In good weather, story time will be held outdoors. The activities change weekly.

Groups can register for their own Wild Wednesday program. Your group will enjoy a private story time and Naturalist talk. Special group pricing for Wild Wednesday programs is \$2 per student. (We don't charge for chapeones.) Groups must register at least one week in advance for a Wild Wednesday visit.

Over the past two summers, Wild Wednesdays have proven to be very popular. Why not stop by and see what it's all about.



The March ESI class studied electricity. Here Laura Bingham demonstrates the principles of static electricity.



LVNC's resident rabbit, George, poses in front of the mural.

As this newsletter goes to press, our favorite mural painters, Diane Stapleton and Nanette Bonugli are hard at work on a continuation of the main mural they did last year.

The new section will be on the wall next to the entrance door and will focus on animals that were once found in our area but have since disappeared. (And some species that have either been re-introduced or have found their way back on their own.)

Creature Feature: State symbol election results

The votes have been counted and Illinois has two new Official State symbols. Over 75,000 votes were cast in the first-ever online election for an Official State Reptile and Amphibian that ended on December 31, 2004. These two species join the white-tailed deer (state mammal), cardinal (state bird), big bluestem grass (state plant), and Tully monster (state fossil).

State reptile: Painted turtle

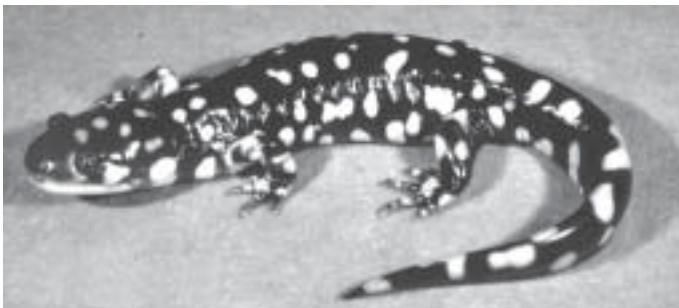
Among the world's most colorful aquatic turtles, the painted turtle is a familiar sight in lakes and ponds across nearly all of Illinois. They are easily identified by the red markings around the edge of the upper shell.

Rarely exceeding 7", this common turtle is often seen basking on logs and aquatic plants, often in large numbers, and often stacked atop each other in several layers. They may appear to be asleep, but if a predator (or curious human) approaches, they will drop instantly into the water and disappear.

Painted turtles are almost entirely aquatic and, except for basking and egg-laying, rarely leave the water. At night they sleep in the water, either resting on a partially submerged object or on the bottom of the pond. In winter, they burrow into the mud at the bottom of the lake or pond to hibernate.

They feed largely on fish, worms, crayfish, insects and other aquatic invertebrates,

continued above right...



Tiger salamander *Ambystoma tigrinum*



Painted turtle *Chrysemys picta*

although they do eat a fair amount of plants. They will also scavenge on carrion.

The painted turtle received 16,742 votes for Official State Reptile.

State amphibian: Tiger salamander

Well named, this largest of all Illinois terrestrial salamanders, has a voracious appetite for any invertebrate it can overpower and swallow. Found throughout Illinois, they can reach over 12" in length.

Most commonly seen in the spring, these amphibians congregate in breeding ponds, often in large numbers, where they mate and then attach large jelly-like clusters of eggs to submerged twigs and branches. The larvae grow through the summer and leave the pond in the fall.

Although they are common in many local woodlands, they are rarely seen because they spend most of their time underground, hiding in abandoned mammal burrows or beneath rotting logs. Generally, they are active on the surface only at night during spring or fall rains.

The Eastern Tiger Salamander received 19,217 votes for Official State Amphibian.



Lake View Nature Center
17 W 063 Hodges Road
Oakbrook Terrace, IL 60181

PRSR STD
U.S. POSTAGE PAID
VILLA PARK, IL
PERMIT NO. 350

ECRWSS
Postal Customer

Hours

Lake View Nature Center
Monday to Friday – 9:00 am to 4:00 pm
Saturday and Sunday – Noon to 4:00 pm

Terrace View Park
Open sunrise to 10 pm

For more information

Lake View Nature Center (630) 941-8747
Heritage Center (630) 627-6100
Fitness Center (630) 574-0420

www.obtpd.org

Staff

Becky Lambert	Supervisor
John Stoddard	Naturalist
John has been with the District 10 years!	
Congratulations!	
Liane Knight	Program Coordinator
Karen Ritter	Environmental Educator
Deanna DeChristopher	Environmental Educator
Shawn Hrabacka	Program Assistant

Fees

The Nature Center is free to the general public.
Donations are appreciated

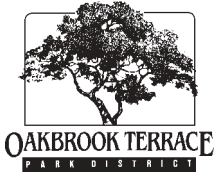
School and Community Groups

The Lake View Nature Center is an excellent place to explore the natural sciences. We offer programs for all ages and grade levels. Check our web site at www.obtpd.org for more details.

Fees for these in-house programs are as follows:
\$4.50 per participant
\$45.00 minimum group charge

Call the Nature Center at (630) 941-8747 for more information or to schedule a program.

If you no longer want to receive this newsletter, please call us at (630) 941-8747.



Lake View Nature Center Summer 2005 George's Gossip

Around the Pond/Lake at Lake View Nature Center

What is the difference between a pond and a lake? A pond is a shallow body of water with plants growing in it (especially in the middle) and a lake is a body of water that is deeper than 6 feet. Both can be large or small.

So is the body of water at the Nature Center a pond or a lake?

You be the judge. Stop by the Nature Center to find the depth by reading our signs!

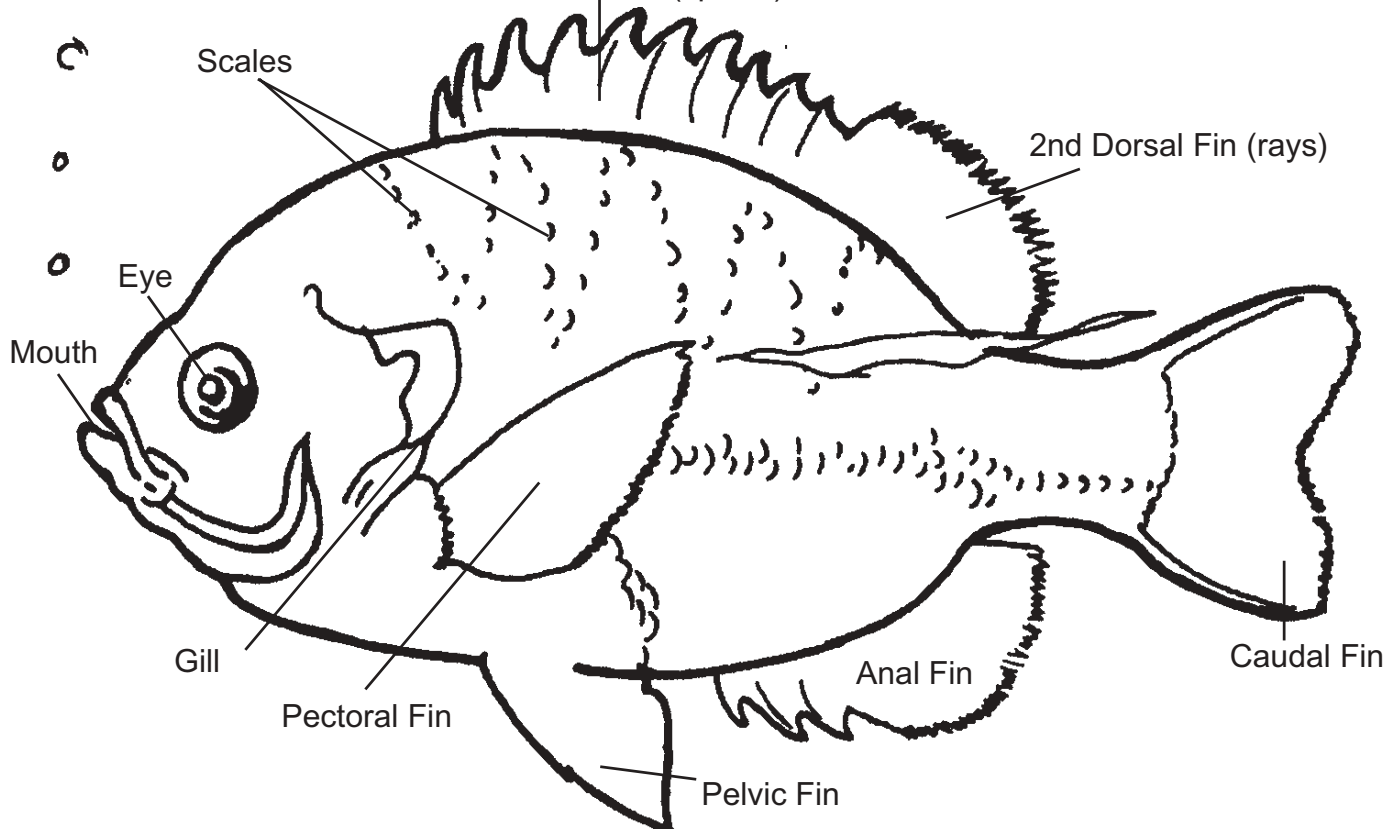
Many people, old and young, love to fish. The waterway at the Lake View Nature Center is stocked with a variety of fish each spring. Bluegill, Sunfish, Bass, and Catfish are raised at fisheries, purchased, and then transported to the Nature Center to be released into the water.

Visit the Nature Center to see who's made a splash this spring!

Bluegill, the State Fish of Illinois

Lepomis macrochirus

1st Dorsal Fin (spines)



There are a lot of words that you should learn before you fish. Here are a few that you can learn by helping George, our Nature Center rabbit, solve the crossword puzzle. The words are hidden forward, backward, up, and down.

C	F	T	C	A	T	C	H	Z	Y	B	F
A	U	A	A	Y	A	M	O	N	X	A	I
M	N	C	T	T	I	K	O	S	E	I	S
E	S	K	F	E	L	P	K	N	O	T	H
R	U	L	I	W	N	E	T	R	Q	E	I
A	C	E	S	E	L	U	R	Q	X	N	N
V	U	B	H	S	I	F	N	U	S	I	G
F	M	O	B	L	U	E	G	I	L	L	L
N	Y	X	A	M	L	I	F	E	Y	E	I
Q	T	W	S	G	I	L	L	T	V	E	C
L	E	O	S	N	B	O	B	B	E	R	E
I	F	R	Y	I	N	G	P	A	N	W	N
A	A	M	Z	F	Y	S	E	R	U	L	S
T	S	S	D	O	R	E	L	E	A	S	E

- Bait
- Bass
- Bluegill
- Bobber
- Camera
- Catch
- Catfish
- Eye
- Film
- Fin
- Fun
- Fishing License
- Frying Pan
- Hook
- Gill
- Knot
- Line
- Lures
- Mucus
- Net
- Quiet
- Release
- Rod
- Rules
- Safety
- Scale
- Sunfish
- Tacklebox
- Tail
- Water
- Worms

Color this water scene that includes three members of the Sunfish family. Do you know that some fish build nests? Male Sunfish move sand or gravel around on the bottom of lakes, ponds, or rivers to build nests for the female's eggs. Can you find a nest in the picture?

